



**Submittal for
Double Wall
Spiral**



HRANEC SHEET METAL, INC.

SUBMITTAL

Double Wall Spiral

INDEX

- 1 NOTES
- 2 CONNECTIONS
- 3 DOUBLE WALL SPIRAL DUCT
- 4 GORE-LOCK ELBOW
- 5 REDUCERS
- 6 TEES
- 7 CROSS TEE
- 8 SQUARE TO ROUND
- 9 SQUARE END SADDLE TAP
- 10 ROUND END SADDLE TAP
- 11 END CAPS
- 12 OFFSETS
- 13 VOLUME DAMPERS

SPECIAL NOTES

1. RECOMMENDED MATERIAL FOR PAINTED SPIRAL DUCT=PAINT GRIP, HOWEVER GALVANIZED G90 CAN EASILY BE PAINTED WITH EXTRA PREP WORK.
2. WE RECOMMENDED WIPING DOWN MINIMAL EXCESS LUBRICANT TWICE BEFORE PAINTING WITH DRY RAGS. IN ADDITION,WIPE DOWN WITH NO RINSE PREPAINT CLEANER #13158 (SHERWIN WILLIAMS) BEFORE APPLYING TWO COATS METAL PRIMER.
3. ALL PRIMER AND PAINT SHOULD BE LABELED TO ADHERE VERY WELL FOR METAL PAINTING APPLICATIONS.
4. MANUFACTURED USING SPIRAL HELIX EQUIPMENT THE NUMBER ONE LEADER IN SPIRAL MANUFACTURING EQUIPMENT.
5. OUR SPIRAL DUCT WORK HAS BEEN EXTENSIVELY AIR TESTED FOR LOW, MEDIUM & HIGH PRESSURES.
6. STANDARD MATERIAL OUTER WALL GALVANIZED G90 INNER WALL PERFORATED GALVANIZED G90
ALTERNATE MATERIAL PAINT GRIP
ALTERNATE MATERIAL STAINLESS STEEL 304L,316
ALTERNATE MATERIAL ALUMINUM 3003
ALTERNATE MATERIAL PVC COATED
*(PVC IS NOT RECOMMENDED FOR EXPOSED DUCT THAT IS TO BE PAINTED DUE TO VARIATIONS IN COLORS)
7. METAL GAUGES ARE PRESSURE CLASS DRIVEN FROM LATEST SMACNA STANDARDS.
8. PROPER SEALING OF ALL COMPONENTS IS REQUIRED TO AVOID DARK AIR STREAKS AFTER INSTALLATION.
9. 1' & 2' DOUBLE WALL AVAILABLE.
10. LONGITUDINAL SEAMS ARE ALL STITCH WELDED ON FITTINGS.

DESCRIPTION

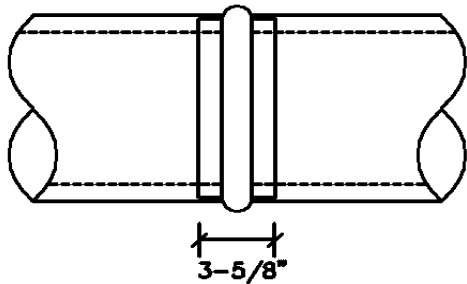
NOTES



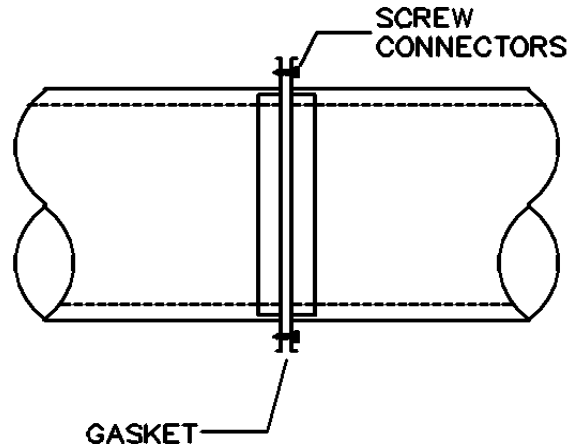
HRANEC SHEET METAL INC
SPIRAL MANUFACTURERS

CONNECTIONS FOR DOUBLE ROUND DUCT AND FITTINGS

COUPLING
CONNECTION
SECURED WITH SCREWS AND SEALED



DOUBLE-WALL
FLANGE
SECURED WITH SCREWS AND SEALED



NOTES:

A. CONNECTIONS AVAILABLE

1. COUPLING
2. DOUBLE-WALL FLANGE
3. SPIRAL MATE WITH BAND IN LIEU OF SCREWS

B. COUPLING CONNECTIONS TO BE CAULKED AND SCREWED EVERY 10"

C. FLANGED CONNECTION TO BE GASKET OR CAULKED AND SCREWED EVERY 10"

D. WHEN USING COUPLING CONNECTION, THE INNER COUPLING CONNECTION TO BE SLIP FIT AND SCREWED. THE OUTER COUPLING CONNECTION TO BE SLIP FIT AND SCREWED.

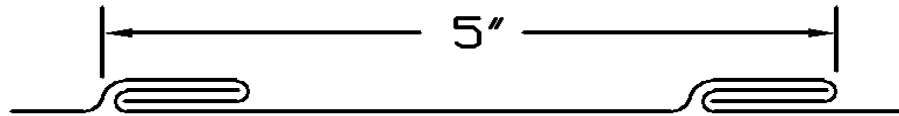
DESCRIPTION

CONNECTIONS

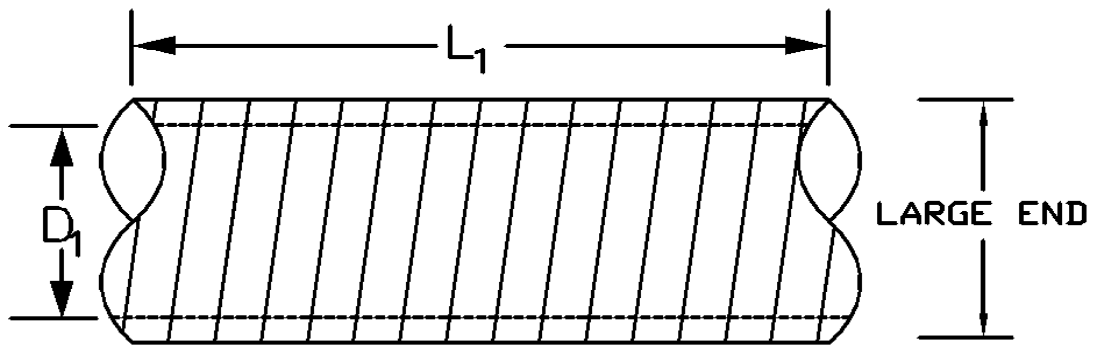


HRANEC SHEET METAL INC
SPIRAL MANUFACTURERS

DOUBLE WALL SPIRAL DUCT



LATERAL SECTION OF 4-PLY PRESSURE PROOF SPIRAL SEAM



NOTES:

- A. AVAILABLE IN EVEN SIZES 4" ϕ ID THROUGH 68" ϕ ID FOR 1" DOUBLE WALL
- B. AVAILABLE IN EVEN SIZES 4" ϕ ID THROUGH 66" ϕ ID FOR 2" DOUBLE WALL
- C. AVAILABLE IN ODD SIZES 5" ϕ AND 7" ϕ ID
- D. LENGTHS-6" THROUGH 240" (STANDARD 120")

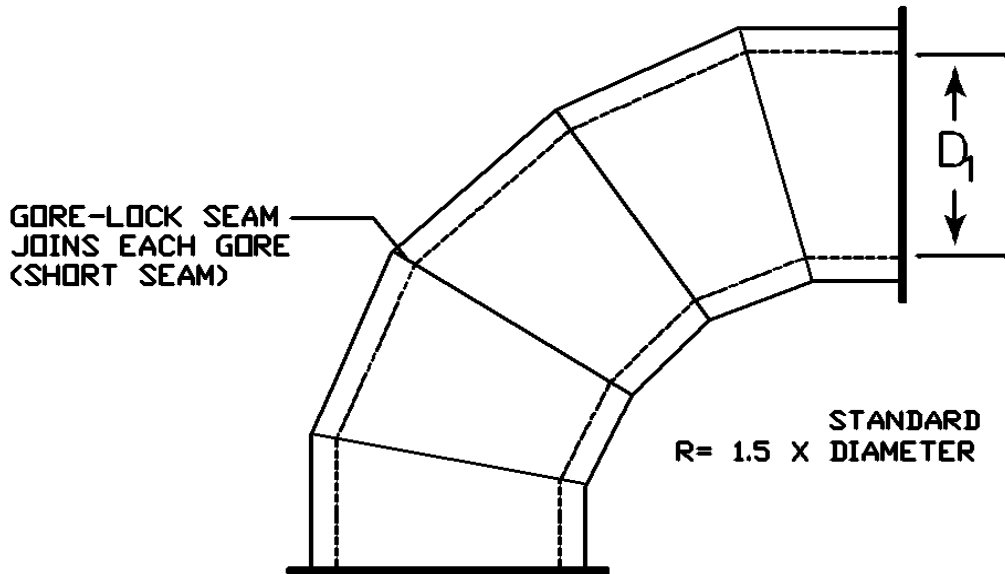
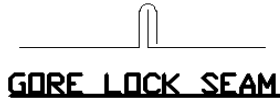
DESCRIPTION

DOUBLE WALL SPIRAL DUCT



HRANEC SHEET METAL INC
SPIRAL MANUFACTURERS

DOUBLE WALL GORE-LOCK ELBOW



NOTES:

- A. AVAILABLE IN 5° THROUGH 90°
- B. STANDARD ELBOWS TO BE GORE LOCK CONSTRUCTION WITH 1/4" LAP STITCH WELD ON THE LONG SEAM.
- C. ALTERNATE CONSTRUCTION TACK & SEAL, AND FULLY WELDED.
- D. COUPLING CONNECTION SMALL END.
- E. FLANGED CONNECTIONS PIPE SIZE.
- F. MITERED ELBOW WITH VANES AVAILABLE WITH TACK & SEAL, TWO PIECE CONSTRUCTION.

DESCRIPTION

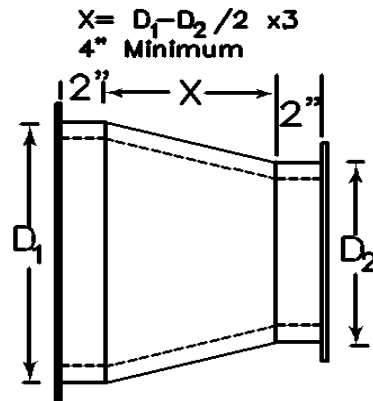
GORE-LOCK ELBOW



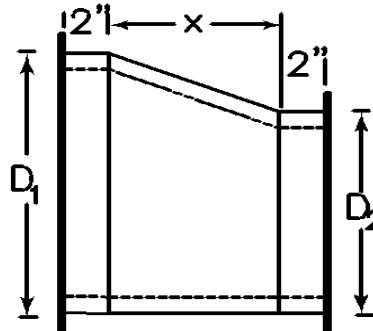
HRANEC SHEET METAL INC
SPIRAL MANUFACTURERS

DOUBLE WALL REDUCERS

CONCENTRIC REDUCER



ECCENTRIC REDUCER $X = D_1 - D_2 (3)$ 4" Minimum



NOTES:

- A. GORE-LOCK SEAM AND 1/4" LAP STITCH WELD (LONGITUDINAL SEAM) USED ON REDUCERS
- B. COUPLING CONNECTION SMALL END.
- C. FLANGED CONNECTIONS PIPE SIZE.

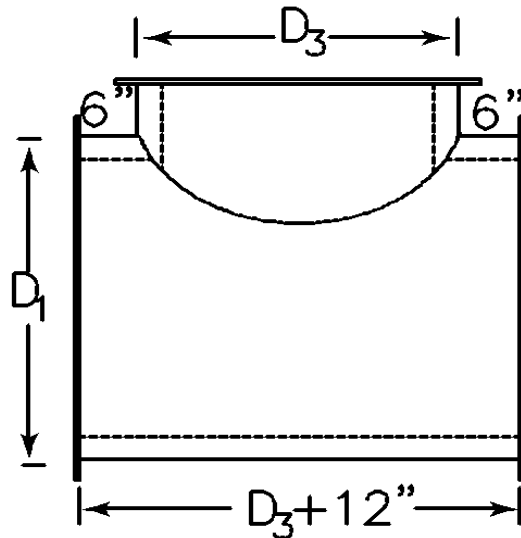
DESCRIPTION

REDUCERS



HRANEC SHEET METAL INC
SPIRAL MANUFACTURERS

DOUBLE WALL TEES



NOTES:

- A. SEALED, TACK WELDED SEAMS USED ON TEES.
- B. LONGITUDINAL SEAMS ARE ALL STITCH WELDED.
- C. COUPLING CONNECTION SMALL END.
- D. FLANGED CONNECTIONS PIPE SIZE.
- E. METAL IS 22 GAUGE UNLESS SPECIFIED OTHERWISE.
- F. DOUBLE WALL LATERAL & REDUCING TEE'S AVAILABLE.
- G. DOUBLE WALL MITERED TEE WITH VANES AVAILABLE WITH TACK & SEAL, TWO PIECE CONSTRUCTION.

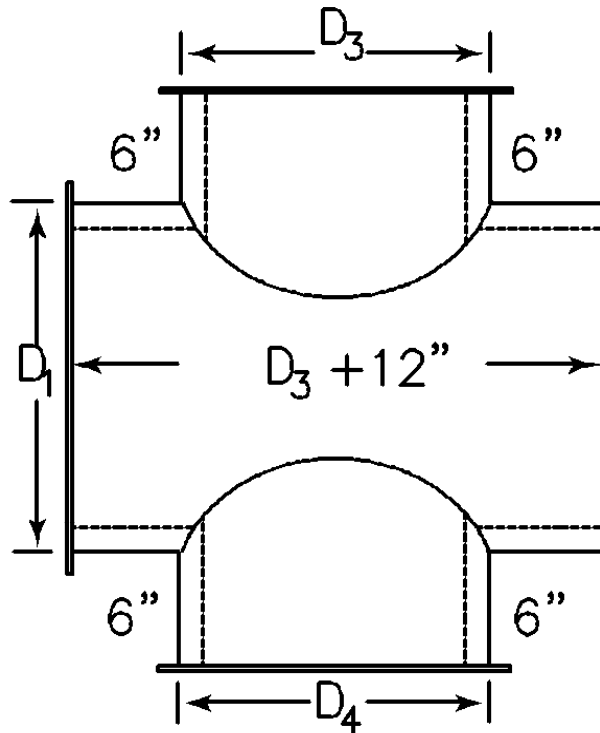
DESCRIPTION

TEES



HRANEC SHEET METAL INC
SPIRAL MANUFACTURERS

DOUBLE WALL
CROSS TEE



NOTES:

- A. SEALED, TACK WELDED SEAMS USED ON CROSSES.
- B. LONGITUDINAL SEAMS ARE ALL STITCH WELDED.
- C. COUPLING CONNECTION SMALL END.
- D. FLANGED CONNECTIONS PIPE SIZE.
- E. METAL IS 22 GAUGE UNLESS SPECIFIED OTHERWISE.
- F. LATERAL & REDUCING DOUBLE WALL CROSSES AVAILABLE.

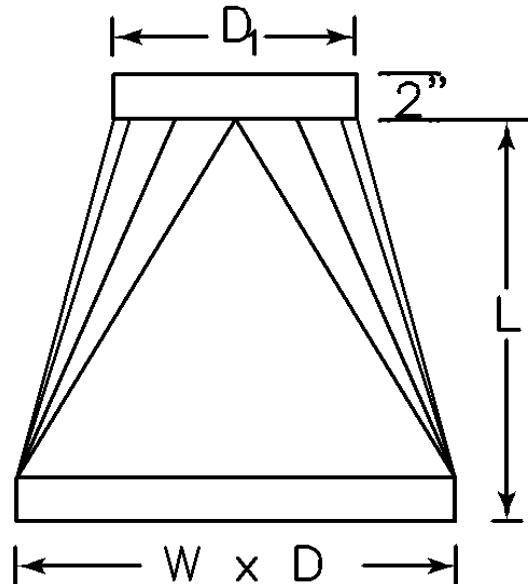
DESCRIPTION

CROSS TEE



HRANEC SHEET METAL INC
SPIRAL MANUFACTURERS

SQUARE to ROUND



NOTES:

- A. SEALED, STITCH WELDED SEAMS USED ON SQUARE TO ROUNDS.
- B. COUPLING CONNECTION SMALL END.
- C. FLANGED CONNECTIONS PIPE SIZE.
- D. RECTANGULAR CONNECTIONS-
 - 1. RAW
 - 2. DUCTMATE 35
 - 3. FLANGE IN OR FLANGE OUT

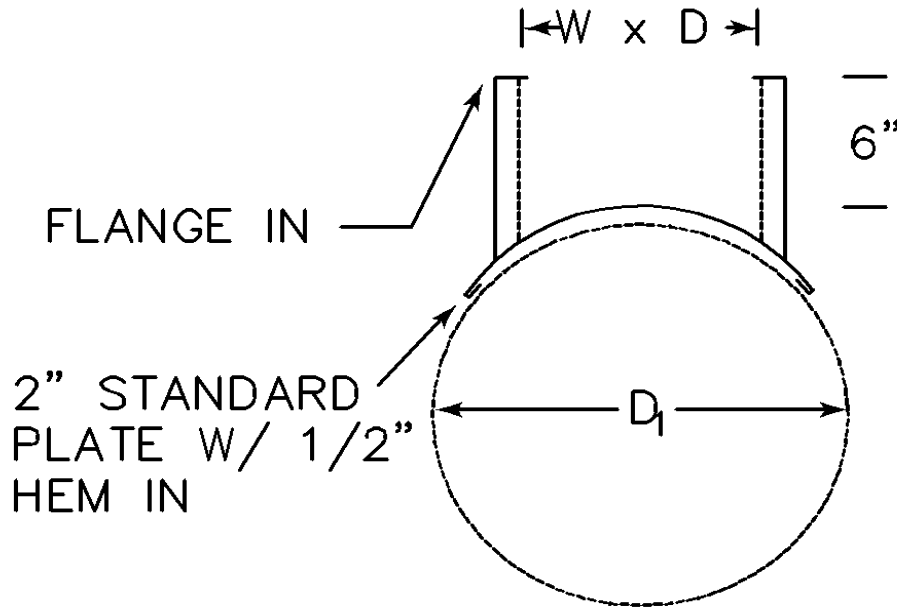
DESCRIPTION

SQUARE TO ROUND



HRANEC SHEET METAL INC
SPIRAL MANUFACTURERS

DOUBLE WALL SQUARE END
SADDLE TAP



NOTES:

- A. SEALED, SPOT WELDED SEAMS USED ON REGISTER BOXES.
- B. STANDARD CONNECTION FLANGE IN.
- C. ALTERNATE CONNECTION FLANGE OUT. IF FLANGE OUT IS USED, SCREW THREADS ARE EXPOSED.
- D. FLANGE IN, BODY IS FACE SIZE OF REGISTER
- E. FLANGE OUT, BODY IS NECK SIZE OF REGISTER
- F. FITTING CAN ALSO HAVE AN END TREATMENT AS A DUCT CONNECTION SUCH AS TDC OR DUCTMATE 35.

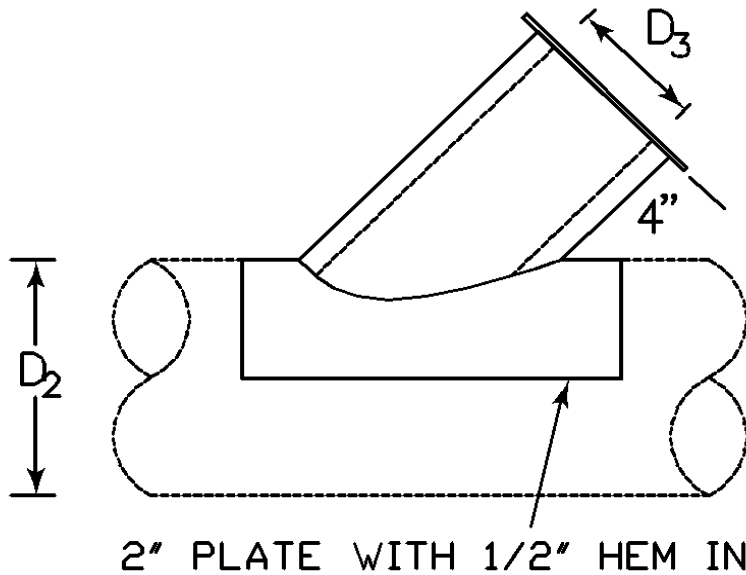
DESCRIPTION

SQUARE END SADDLE TAP



HRANEC SHEET METAL INC
SPIRAL MANUFACTURERS

DOUBLE WALL ROUND END
SADDLE TAP



NOTES:

- A. SEALED, STITCH WELDED SEAMS.
- B. COUPLING CONNECTION SMALL END.
- C. FLANGED CONNECTIONS PIPE SIZE.
- D. STANDARD 45° & 90° ANGLES. ALTERNATE ANGLES MAY BE AVAILABLE.
- E. CONICAL OR BELLMOUTH AVAILABLE.

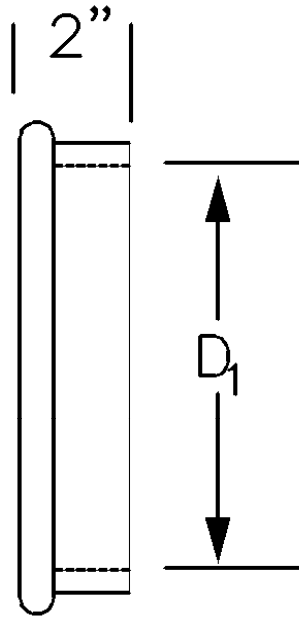
DESCRIPTION

ROUND END SADDLE TAP



HRANEC SHEET METAL INC
SPIRAL MANUFACTURERS

DOUBLE WALL
END CAPS



NOTES:

A. TACK & SEAL CONSTRUCTION

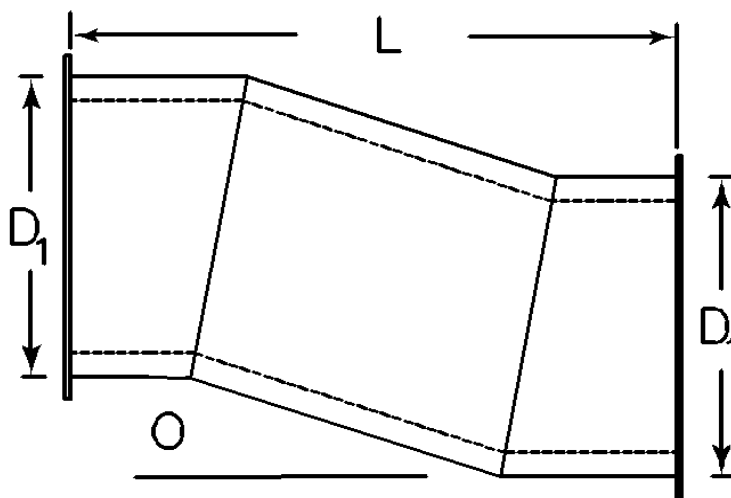
DESCRIPTION

END CAPS



HRANEC SHEET METAL INC
SPIRAL MANUFACTURERS

DOUBLE WALL OFFSETS



NOTES:

- A. LENGTH TWO OR THREE TIMES THE OFFSET
- B. GORE-LOCK SEAM AND STITCH WELD LONG SEAM
- C. COUPLING CONNECTION SMALL END.
- D. FLANGED CONNECTIONS PIPE SIZE.

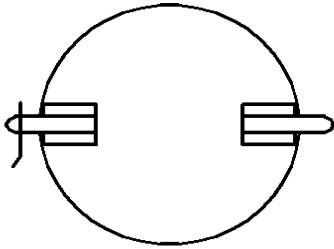
DESCRIPTION

OFFSETS

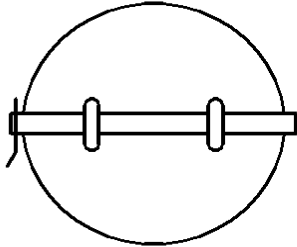


HRANEC SHEET METAL INC
SPIRAL MANUFACTURERS

VOLUME DAMPERS



- FOR DAMPERS 18"Ø AND SMALLER.
- HARDWARE IS HAMMERED TO DAMPER BLADE.
- RUBBER GROMMETS AVAILABLE FOR AIR-TIGHT SEAL



- FOR DAMPERS 20"Ø AND LARGER.
- 1/2" BAR U-BOLTED TO DAMPER BLADE.
- RUBBER GROMMETS AVAILABLE FOR AIR-TIGHT SEAL

DESCRIPTION

VOLUME DAMPERS



HRANEC SHEET METAL INC
SPIRAL MANUFACTURERS