



# PRODUCT CATALOG

DUCTWORK, FITTINGS AND ROOF PRODUCTS



# WELCOME TO HRANEC CORP.

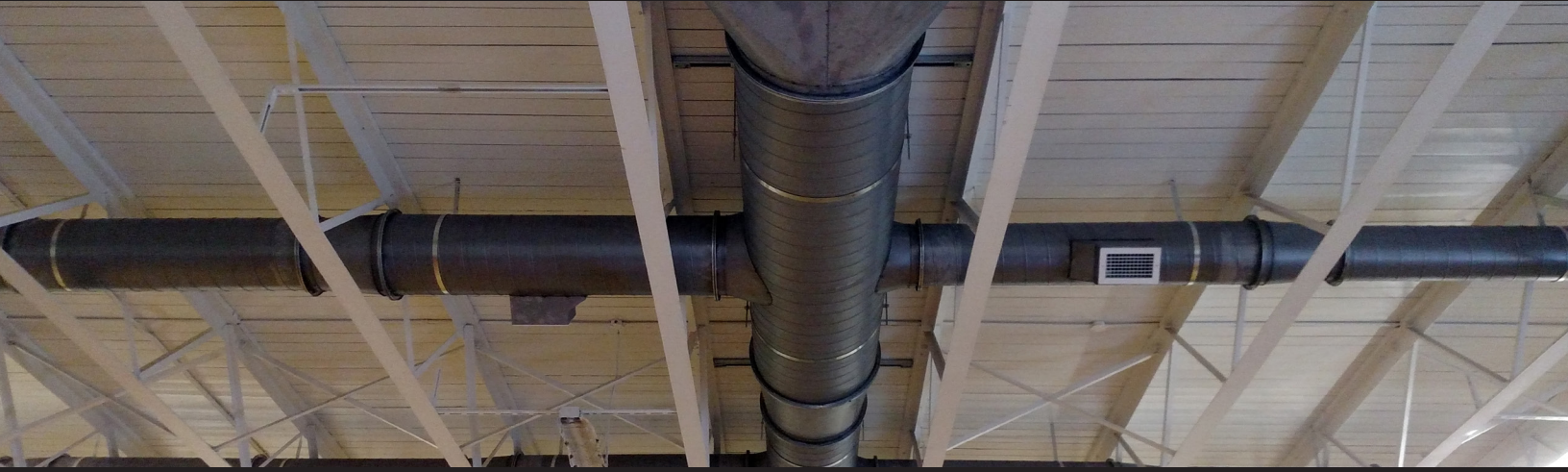


## INDEX

PAGE 1 .....	SPIRAL DUCTWORK, FITTINGS
PAGE 2 .....	STRAIGHT STICK-ON TAPS
PAGE 3 .....	CONICAL STICK-ON TAPS
PAGE 4 .....	STO'S
PAGE 5 .....	COLLARS
PAGE 6 .....	NON-GASKETED FITTINGS
PAGE 8-9 .....	GASKETED FITTINGS
PAGE 10 .....	FULLY WELDED DUCTWORK
PAGE 11 .....	SPIRAL CONNECTIONS
PAGE 12 .....	DAMPERS AND HARDWARE
PAGE 13 .....	HRANA FLANGES
PAGE 14 .....	OVAL DUCTWORK
PAGE 15 .....	RECTANGULAR CONNECTIONS
PAGE 16 .....	ACCESS DOORS
PAGE 17 .....	BIRD SCREENS, GRD BOXES & PLENUMS
PAGE 18-19 .....	DROP BOX DIFFUSERS, ACCESSORIES
PAGE 20 .....	CONCRETE FORMS, LIGHT SHIELDS
PAGE 21 .....	ROOF CURBS
PAGE 22 .....	SPECIAL CURBS & ADAPTORS
PAGE 23 .....	ROOF PORTS
PAGE 24 .....	EQUIPMENT RAILS
INSIDE BACK COVER .....	ABOUT THE COMPANY



# SPIRAL DUCTWORK & FITTINGS



## SPIRAL DUCTWORK

- Even sizes 4" to 70", Odd sizes 5" to 9"
- Single wall construction
- Double wall is available in 1", 2" and 3" fully insulated
- Materials: aluminum, stainless steel, PVC, galvanized, paint grip and perforated
- Gauges 16 through 26
- Stock 10' lengths



## FITTINGS

- Short seam of fittings to be gorelocked or tack n sealed (depending on fitting type)
  - Long seam of fittings to be stichwelded
  - Available in Gasketed and Non Gasketed



- Elbows
- Reducers
- Off-sets
  - Tees
- Cross Tees
- Laterals
- Saddle Taps
  - Y-branches
- Square to Round
  - End Caps
- Canvas Connections
- Custom Fittings Available



# STRAIGHT STICK-ON TAPS

## STRAIGHT STICKY NO DAMPER

MODEL	SIZE	MODEL	SIZE
SS-4	4"	SS-10	10"
SS-5	5"	SS-12	12"
SS-6	6"	SS-14	14"
SS-7	7"	SS-16	16"
SS-8	8"	SS-18	18"
SS-9	9"	SS-20	20"
		SS-22	22"



- Scoop Option Available
- 1/2" Rod Damper Available

## STRAIGHT STICKY W/DAMPER & RAPID STAND-OFF

MODEL	SIZE	MODEL	SIZE
SSDR-4	4"	SSDR-10	10"
SSDR-5	5"	SSDR-12	12"
SSDR-6	6"	SSDR-14	14"
SSDR-7	7"	SSDR-16	16"
SSDR-8	8"	SSDR-18	18"
SSDR-9	9"	SSDR-20	20"
		SSDR-22	22"



- Scoop Option Available
- 1/2" Rod Damper Available

## STRAIGHT STICKY W/DAMPER

MODEL	SIZE	MODEL	SIZE
SSD-4	4"	SSD-10	10"
SSD-5	5"	SSD-12	12"
SSD-6	6"	SSD-14	14"
SSD-7	7"	SSD-16	16"
SSD-8	8"	SSD-18	18"
SSD-9	9"	SSD-20	20"
		SSD-22	22"



- Scoop Option Available
- 1/2" Rod Damper Available

## STRAIGHT STICKY W/DAMPER & BRACKET STAND-OFF

MODEL	SIZE	MODEL	SIZE
SSDB-4	4"	SSDB-10	10"
SSDB-5	5"	SSDB-12	12"
SSDB-6	6"	SSDB-14	14"
SSDB-7	7"	SSDB-16	16"
SSDB-8	8"	SSDB-18	18"
SSDB-9	9"	SSDB-20	20"
		SSDB-22	22"



- Scoop Option Available
- 1/2" Rod Damper Available



# CONICAL STICK-ON TAPS



## CONICAL STICK-ON

MODEL	SIZE	MODEL	SIZE
BS-4	4"	BS-10	10"
BS-5	5"	BS-12	12"
BS-6	6"	BS-14	14"
BS-7	7"	BS-16	16"
BS-8	8"	BS-18	18"
BS-9	9"	BS-20	20"
		BS-22	22"



- Scoop Option Available
- 1/2" Rod Damper Available

## CONICAL STICK-ON WITH DAMPER AND RAPID STAND-OFF

MODEL	SIZE	MODEL	SIZE
BSDR-4	4"	BSDR-10	10"
BSDR-5	5"	BSDR-12	12"
BSDR-6	6"	BSDR-14	14"
BSDR-7	7"	BSDR-16	16"
BSDR-8	8"	BSDR-18	18"
BSDR-9	9"	BSDR-20	20"
		BSDR-22	22"



- Scoop Option Available
- 1/2" Rod Damper Available

## CONICAL STICK-ON WITH DAMPER

MODEL	SIZE	MODEL	SIZE
BSD-4	4"	BSD-10	10"
BSD-5	5"	BSD-12	12"
BSD-6	6"	BSD-14	14"
BSD-7	7"	BSD-16	16"
BSD-8	8"	BSD-18	18"
BSD-9	9"	BSD-20	20"
		BSD-22	22"



- Scoop Option Available
- 1/2" Rod Damper Available

## CONICAL STICK-ON WITH DAMPER AND HIGH HAT STAND-OFF

MODEL	SIZE	MODEL	SIZE
BSDB-4	4"	BSDB-10	10"
BSDB-5	5"	BSDB-12	12"
BSDB-6	6"	BSDB-14	14"
BSDB-7	7"	BSDB-16	16"
BSDB-8	8"	BSDB-18	18"
BSDB-9	9"	BSDB-20	20"
		BSDB-22	22"



- Scoop Option Available
- 1/2" Rod Damper Available



# STO'S

## STO STICKY NO DAMPER

MODEL	SIZE	MODEL	SIZE
STO-4	4"	STO-10	10"
STO-5	5"	STO-12	12"
STO-6	6"	STO-14	14"
STO-7	7"	STO-16	16"
STO-8	8"	STO-18	18"
STO-9	9"	STO-20	20"
		STO-22	22"



- Scoop Option Available
- 1/2" Rod Damper Available

## STO STICKY W/DAMPER & RAPID STAND-OFF

MODEL	SIZE	MODEL	SIZE
STO-4	4"	STO-10	10"
STO-5	5"	STO-12	12"
STO-6	6"	STO-14	14"
STO-7	7"	STO-16	16"
STO-8	8"	STO-18	18"
STO-9	9"	STO-20	20"
		STO-22	22"



- Scoop Option Available
- 1/2" Rod Damper Available

## STO STICKY W/DAMPER

MODEL	SIZE	MODEL	SIZE
STO-4	4"	STO-10	10"
STO-5	5"	STO-12	12"
STO-6	6"	STO-14	14"
STO-7	7"	STO-16	16"
STO-8	8"	STO-18	18"
STO-9	9"	STO-20	20"
		STO-22	22"



- Scoop Option Available
- 1/2" Rod Damper Available

## STO STICKY W/DAMPER & BRACKET STAND-OFF

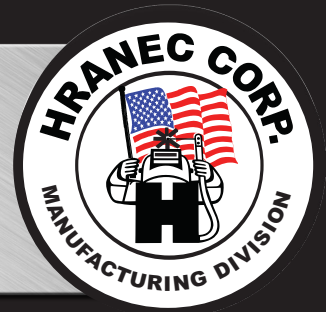
MODEL	SIZE	MODEL	SIZE
STO-4	4"	STO-10	10"
STO-5	5"	STO-12	12"
STO-6	6"	STO-14	14"
STO-7	7"	STO-16	16"
STO-8	8"	STO-18	18"
STO-9	9"	STO-20	20"
		STO-22	22"



- Scoop Option Available
- 1/2" Rod Damper Available

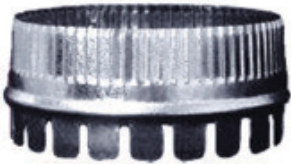


# COLLARS



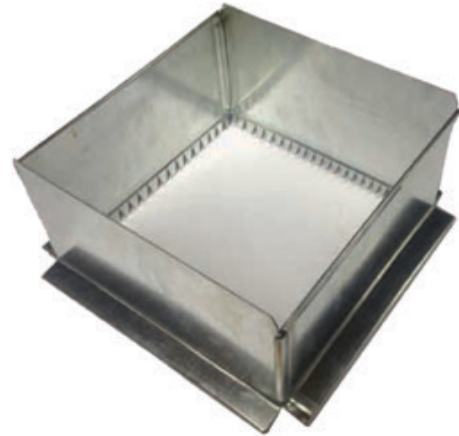
## A-COLLARS

MODEL	SIZE	LENGTH
A-4	4"	2.5"
A-5	5"	2.5"
A-6	6"	2.5"
A-7	7"	2.5"
A-8	8"	2.5"
A-9	9"	2.5"
A-10	10"	2.5"
A-12	12"	2.5"
A-14	14"	2.5"
A-16	16"	2.5"



## SQUARE STARTER COLLARS

MODEL	SIZE
SSC-6	6x6
SSC-7	7x7
SSC-8	8x8
SSC-9	9x9
SSC-10	10x10
SSC-11	11x11
SSC-12	12x12
SSC-14	14x14
SSC-16	16x16
SSC-18	18x18
SSC-20	20x20
SSC-22	22x22
SSC-24	24x24



# Pipe & Non-Gasketed FITTING

## STOCK SPIRAL PIPE

MODEL	SIZE
SP-4	4"
SP-5	5"
SP-6	6"
SP-7	7"
SP-8	8"
SP-9	9"
SP-10	10"
SP-12	12"
SP-14	14"
SP-16	16"
SP-18	18"
SP-20	20"
SP-22	22"
SP-24	24"



## STOCK 90 DEGREE ELBOWS

MODEL	SIZE
90-4	4"
90-5	5"
90-6	6"
90-7	7"
90-8	8"
90-9	9"
90-10	10"
90-12	12"
90-14	14"
90-16	16"
90-18	18"
90-20	20"
90-22	22"
90-24	24"



• Gore Lock Seams



# NON-GASKETED FITTINGS

## STOCK 45 DEGREE ELBOWS

MODEL	SIZE
45-4	4"
45-5	5"
45-6	6"
45-7	7"
45-8	8"
45-9	9"
45-10	10"
45-12	12"
45-14	14"
45-16	16"
45-18	18"
45-20	20"
45-22	22"
45-24	24"



• Gore Lock Seams

## END CAP

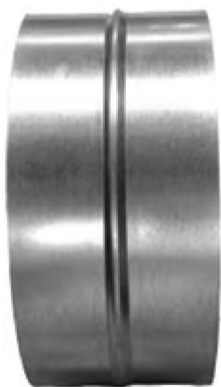
MODEL	SIZE
EC-4	4"
EC-5	5"
EC-6	6"
EC-7	7"
EC-8	8"
EC-9	9"
EC-10	10"
EC-12	12"
EC-14	14"
EC-16	16"
EC-18	18"
EC-20	20"
EC-22	22"
EC-24	24"



• Gore Lock Seams

## COUPLING

MODEL	SIZE
CUP-4	4"
CUP-5	5"
CUP-6	6"
CUP-7	7"
CUP-8	8"
CUP-9	9"
CUP-10	10"
CUP-12	12"
CUP-14	14"
CUP-16	16"
CUP-18	18"
CUP-20	20"
CUP-22	22"
CUP-24	24"



## TEE

MODEL	SIZE
TEE	4"x4"x4"
TEE	6"x6"x6"
TEE	8"x8"x8"
TEE	10"x10"x10"
TEE	12"x12"x12"
TEE	14"x14"x14"
TEE	16"x16"x16"
TEE	18"x18"x18"
TEE	20"x20"x20"





# NON-GASKETED FITTINGS



## SADDLE-TAP

MODEL	SIZE
SAD	4" on 6"
SAD	5" on 5"
SAD	4" on 8"
SAD	5" on 8"
SAD	6" on 8"
SAD	6" on 10"
SAD	8" on 10"
SAD	6" on 12"
SAD	10" on 12"
SAD	6" on 14"
SAD	10" on 14"
SAD	12" on 14"
SAD	8" on 16"
SAD	10" on 14"
SAD	12" on 16"
SAD	10" on 16"
SAD	12" on 18"
SAD	10" on 18"



## REDUCER

MODEL	SIZE
RED	5" to 4"
RED	6" to 4"
RED	6" to 5"
RED	7" to 6"
RED	8" to 4"
RED	8" to 6"
RED	8" to 7"
RED	9" to 8"
RED	10" to 8"
RED	10" to 9"
RED	12" to 6"
RED	12" to 8"
RED	12" to 10"
RED	14" to 10"
RED	14" to 12"
RED	16" to 12"
RED	16" to 14"
RED	18" to 16"



• Concentric design on all stock reducers

# Gasketed FITTINGS

## 90 DEGREE ELBOWS

MODEL	SIZE
G-90	5"
G-90	6"
G-90	7"
G-90	8"
G-90	9"
G-90	10"
G-90	12"
G-90	14"
G-90	16"
G-90	18"
G-90	20"
G-90	22"
G-90	24"



## 45 DEGREE ELBOWS

MODEL	SIZE
G-45	5"
G-45	6"
G-45	7"
G-45	8"
G-45	9"
G-45	10"
G-45	12"
G-45	14"
G-45	16"
G-45	18"
G-45	20"
G-45	22"
G-45	24"





# GASKETED FITTINGS

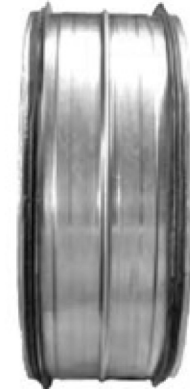
## END CAP

MODEL	SIZE
GEC-90	5"
GEC-90	6"
GEC-90	7"
GEC-90	8"
GEC-90	9"
GEC-90	10"
GEC-90	12"
GEC-90	14"
GEC-90	16"
GEC-90	18"
GEC-90	20"
GEC-90	22"
GEC-90	24"



## GASKET COUPLING

MODEL	SIZE
GEC-45	5"
GEC-45	6"
GEC-45	7"
GEC-45	8"
GEC-45	9"
GEC-45	10"
GEC-45	12"
GEC-45	14"
GEC-45	16"
GEC-45	18"
GEC-45	20"
GEC-45	22"
GEC-45	24"



## TEE

MODEL	SIZE
GT	6x6x6
GT	8x8x8
GT	10x10x10
GT	12X12X12
GT	14X14X14
GT	16X16X16
GT	18X18X18
GT	20X20X20



## SADDLE-TAP

MODEL	SIZE
GSAD	5 on 5
GSAD	5 on 8
GSAD	6 on 8
GSAD	6 on 10
GSAD	8 on 10
GSAD	6 on 12
GSAD	6 on 12
GSAD	10 on 12
GSAD	6 on 14
GSAD	10 on 14
GSAD	12 on 14
GSAD	8 on 16
GSAD	10 on 14
GSAD	12 on 16
GSAD	10 on 16
GSAD	12 on 18
GSAD	10 on 18





# GASKETED FITTINGS



## REDUCER



MODEL	SIZE
GRED	5 to 4
GRED	6 to 4
GRED	6 to 5
GRED	7 to 6
GRED	8 to 4
GRED	8 to 6
GRED	8 to 7
GRED	9 to 8
GRED	10 to 8
GRED	10 to 9
GRED	12 to 6
GRED	12 to 8
GRED	12 to 10
GRED	14 to 10
GRED	14 to 12
GRED	16 to 12
GRED	16 to 14
GRED	18 to 16

- Double lipped EPDM Rubber
- Fast and Easy Installation
- Can be installed in all kinds of weath
- Environmentally friendly - solvent-fr
- Available in 5" - 40"

- Concentric design for stock reducers
- 4" is not gasketed

## Register TAP

### SPIRAL REGISTER TAP



- Available with the inside painted flat black

MODEL	SIZE
SRT - 65	6 x 6 x 5
SRT - 66	6 x 6 x 6
SRT - 86	8 x 8 x 6
SRT - 88	8 x 8 x 8
SRT - 96	9 x 9 x 6
SRT - 98	9 x 9 x 8
SRT - 108	10 x 10 x 8
SRT - 1010	10 x 10 x 10
SRT - 126	12 x 12 x 6
SRT - 128	12 x 12 x 8
SRT - 1210	12 x 12 x 10
SRT - 1212	12 x 12 x 12
SRT - 1512	15 x 15 x 12
SRT - 1812	18 x 18 x 12
SRT - 1814	18 x 18 x 14
SRT - 1816	18 x 18 x 16
SRT - 1818	18 x 18 x 18
SRT - 22106	22 x 10 x 6
SRT - 22108	22 x 10 x 8
SRT - 221010	22 x 10 x 10
SRT - 226	22 x 22 x 6
SRT - 228	22 x 22 x 8
SRT - 2210	22 x 22 x 10
SRT - 2212	22 x 22 x 12
SRT - 2214	22 x 22 x 14
SRT - 2216	22 x 22 x 16
SRT - 2218	22 x 22 x 18



# FULLY WELDED DUCTWORK

## WELDED RECTANGULAR

- Gauges 14 through 18
- Lengths: 59" Standard Straight Pieces
- Materials: Galvanized, Black Iron, Stainless Steel and Aluminum
- Connections: 1/2" out AA or Angle Flange



## WELDED ROUND

- Gauges 14 through 18
- Lengths: 59" Standard Straight Pieces
- Materials: Galvanized, Black Iron, Stainless Steel and Aluminum
- Connections: 1/2" out AA or Angle Flange



## Spiral CONNECTIONS

### COUPLINGS



- Sizes 4" to 70" available
- Available in Round and Oval
- Available in Single and Double wall

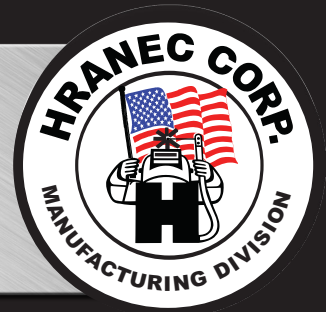
### GASKETED COUPLINGS



- Sizes 5" to 40" available
- Available in Round and Oval
- Available in Single and Double wall



# SPIRAL CONNECTIONS

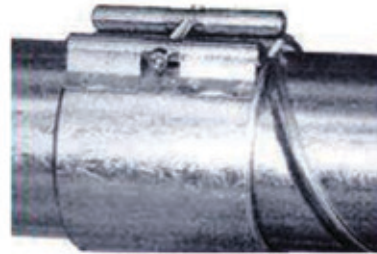


## ANGLE RINGS



- Sizes 3" to 72" available
- Available in Round and Oval

## QUICK SLEEVE



- Sizes 3" to 14" available
- Available in Round and Oval
- Available in Single and Double wall

## FLANGE



- Sizes 8" to 72" available
- Available in Round and Oval
- Available in Single and Double wall

## FLANGE w/CLOSURE BAND

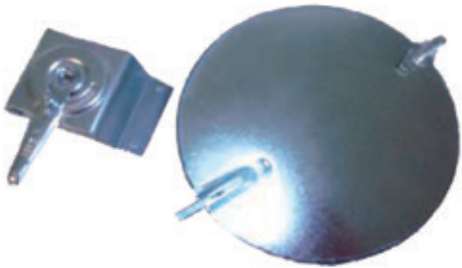


- Sizes 8" to 72" available
- Available in Round and Oval
- Available in Single and Double wall



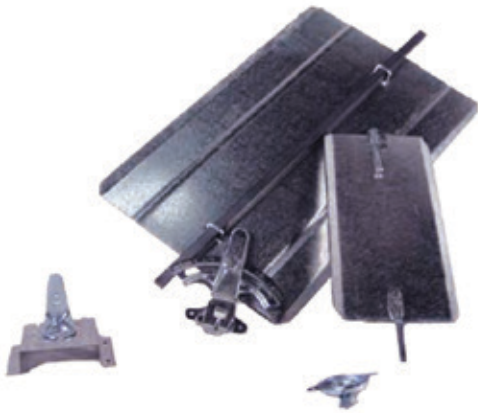
# DAMPERS & HARDWARE

## DAMPER ROUND



- Available in Galvanized, Stainless Steel, and Aluminum
- Stand-off Handles and Insulation Spacers Available
- 1/2" Rod and Heavy Duty Quadrants Available

## DAMPER RECTANGULAR



- Available in Galvanized, Stainless Steel, and Aluminum
- Stand-off Handles and Insulation Spacers Available
- 1/2" Rod and Heavy Duty Quadrants Available

## DAMPER OVAL

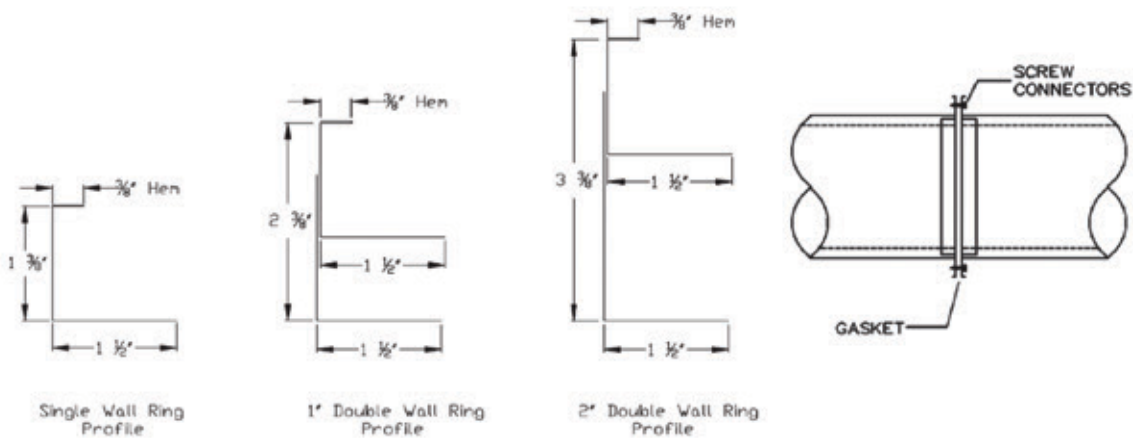
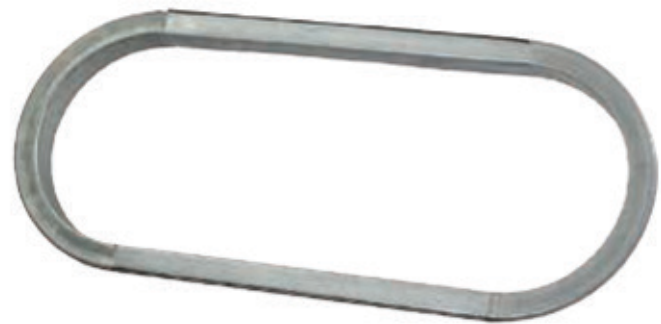


- Available in Galvanized, Stainless Steel, and Aluminum
- Stand-off Handles and Insulation Spacers Available
- 1/2" Rod and Heavy Duty Quadrants Available

# HRANA FLANGES



- Easy installation
- Can be installed on-site
- No special tools required
- Metal thickness, 16 guage
- Available in sizes 8" - 70" (1" increments)
- Available materials are galvanized, aluminum, pvc, 304 stainless steel
- Hranaflange is rated for +/-10" w.g. pressure
- Hranaflange is a smacna equivalent t24 reinforcement flange as noted in smacna third edition-2005







# OVAL DUCTWORK

## Oval DUCTWORK

### OVAL DUCTWORK

- Gauges 16 through 22
- Materials: Aluminum, Stainless Steel, PVC, Galvanized, Paint Grip and Perforated
- Connections: Slip Fit or Flanged
- Single Wall, Double Wall and Spiracoustically Lined Duct available
- Double Wall and Lined Duct are available in 1" and 2" fully insulated



\* Connections = Couplings, Flange, Angle Ring

### FITTINGS

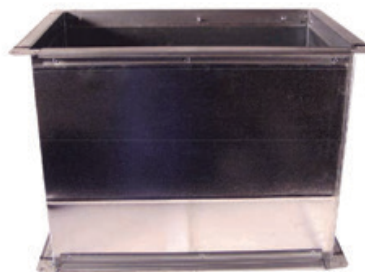
- Short seam of fittings to be tack n sealed
- Long seam of fittings to be stitchwelded
- Elbows
- Reducers
- Off-sets
- Tees
- Cross Tees
- Laterals
- Saddle Taps
- Y-branches
- Square to Oval
- End Caps
- Canvas Connections
- Custom Fittings Available



## Rectangular DUCTWORK

### SQUARE DUCTWORK

- Lengths:
  - Slip and Drive = 59"
  - TDC = 56"
  - Ductmate Flange = 60"
- Single Wall Construction
- Double Wall is available in 1", 1 1/2" and 2"
- Gauges 16 through 26
- Materials: Aluminum, Stainless Steel, PVC, Galvanized, Paint Grip and Perforated
- Insulations: Black Matt Faced or Armaflex
- Connections: Slip and Drive, TDC or Ductmate Flange



### FITTINGS

- Square Throat Elbows with or without Vanes
- Radius Elbows
- Tees Square Throat or Radius
- Transitions
- Shoe Taps
- Parker Fittings
- Off-Sets
- Off-Setting Transitions
- End Caps
- Square to Rounds
- Canvas Connection

# RECTANGULAR CONNECTIONS



## FLAT SLIP



- Available in 5' Bundles
- Gauge 22, 24, 26 or .032 Aluminum
- Materials: PVC, Stainless Steel, Paint Grip and Aluminum

## STANDING SLIP



- Available in 5' Bundles
- Gauge 22, 24, 26 or .032 Aluminum
- Materials: PVC, Stainless Steel, Paint Grip and Aluminum

## FLAT DRIVE



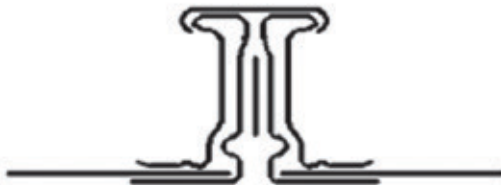
- Available in 5' Bundles
- Gauge 22, 24, 26 or .032 Aluminum
- Materials: PVC, Stainless Steel, Paint Grip and Aluminum

## STANDING DRIVE



- Available in 5' Bundles
- Gauge 22, 24, 26 or .032 Aluminum
- Materials: PVC, Stainless Steel, Paint Grip and Aluminum

## DUCTMATE or TDC



## Available Accessories

- Nuts & Bolts: Galvanized, Stainless Steel or Plastic
- Neoprene Gasket
- Cleats
- Ductmate Frames
- Butyl Gasket
- Corners Loose



# ACCESS DOORS

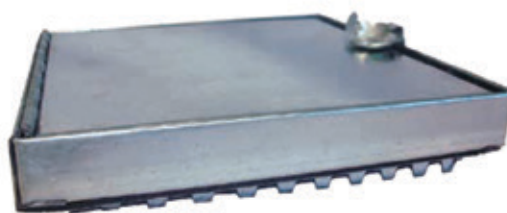
## DOVE TAIL FRAME

CAMMED



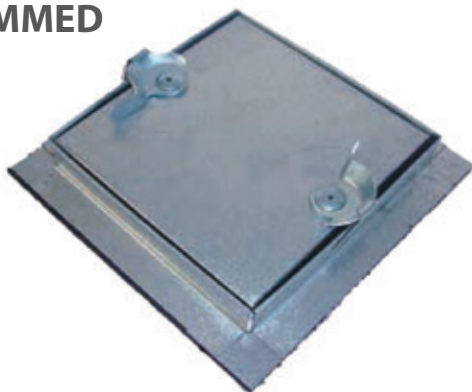
## DOVE TAIL FRAME

HINGED



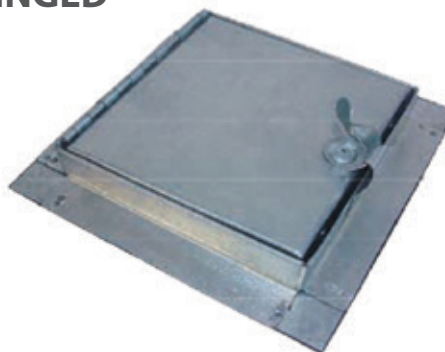
## PRESS ON 1" FLANGE

CAMMED



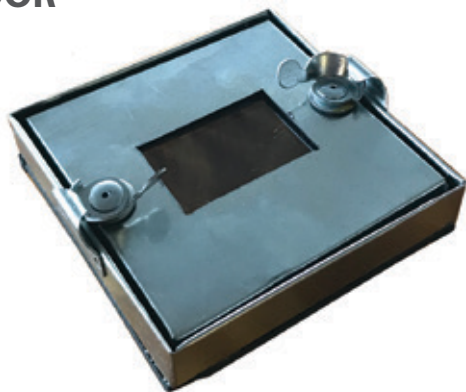
## PRESS ON 1" FLANGE

HINGED



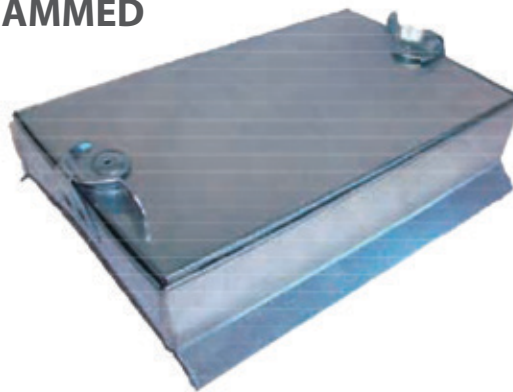
## VIEW PORT ACCESS

DOOR



## ROUND

CAMMED



### SQUARE SIZE

6 x 6	12 x 12	20 x 20
8 x 8	16 x 16	24 x 24
10 x 10	18 x 18	

### ROUND SIZE

8 x 4 on	10 x 6 on	16 x 12 on
5" to 7"	6" to 24"	18" to 60"
Round	Round	Round



# BIRD SCREENS

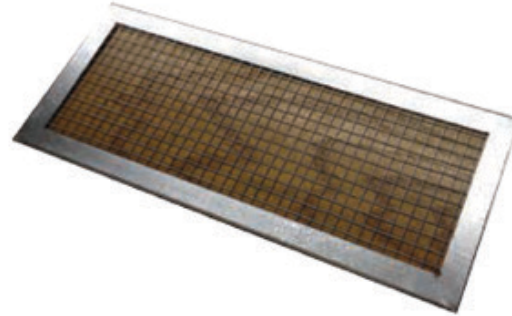


## ROUND BIRD SCREEN



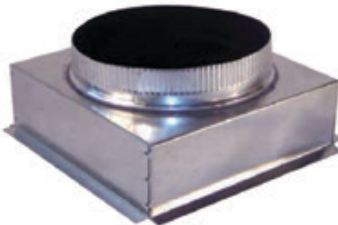
- Available in Galvanized & Stainless Steel

## SQUARE BIRD SCREEN



## GRD Boxes & PLENUMS

### GRD BOX



- Available with the inside painted flat black

MODEL	SIZE
RB - 65	6 x 6 x 5
RB - 66	6 x 6 x 6
RB - 86	8 x 8 x 6
RB - 88	8 x 8 x 8
RB - 96	9 x 9 x 6
RB - 98	9 x 9 x 8
RB - 108	10 x 10 x 8
RB - 1010	10 x 10 x 10
RB - 126	12 x 12 x 6
RB - 128	12 x 12 x 8
RB - 1210	12 x 12 x 10
RB - 1212	12 x 12 x 12
RB - 1512	15 x 15 x 12
RB - 1812	18 x 18 x 12
RB - 1814	18 x 18 x 14
RB - 1816	18 x 18 x 16
RB - 1818	18 x 18 x 18
RB - 22106	22 x 10 x 6
RB - 22108	22 x 10 x 8
RB - 221010	22 x 10 x 10
RB - 226	22 x 22 x 6
RB - 228	22 x 22 x 8
RB - 2210	22 x 22 x 10
RB - 2212	22 x 22 x 12
RB - 2214	22 x 22 x 14
RB - 2216	22 x 22 x 16
RB - 2218	22 x 22 x 18

### LINEAR PLENUMS



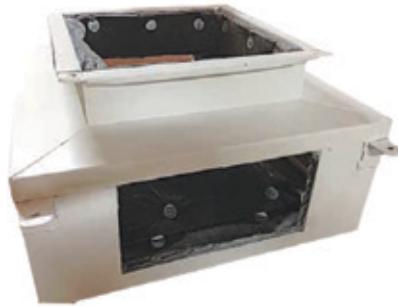
MODEL	SIZE	NECK
LP - 24 - 6	24" x 2"	6"
LP - 24 - 8	24" x 2"	8"
LP - 24 - 10	24" x 2"	10"
LP - 24 - 12	24" x 2"	12"
LP - 48 - 6	48" x 2"	6"
LP - 48 - 8	48" x 2"	8"
LP - 48 - 10	48" x 2"	10"
LP - 48 - 12	48" x 2"	12"

- Designed to fit layin ceiling applications
- Raw end treatment available
- Flanged end treatment available
- Hemmed end treatment available



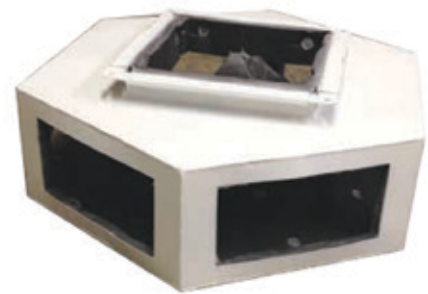
# DROP BOX DIFFUSERS

## SQUARE DROP BOX DIFFUSERS



MODEL	SIZE
LP - 24 - 6	24" x 2"
LP - 24 - 8	24" x 2"
LP - 24 - 10	24" x 2"
LP - 24 - 12	24" x 2"
LP - 48 - 6	48" x 2"
LP - 48 - 8	48" x 2"
LP - 48 - 10	48" x 2"
LP - 48 - 12	48" x 2"
LP - 48 - 6	48" x 2"
LP - 48 - 8	48" x 2"
LP - 48 - 10	48" x 2"
LP - 48 - 12	48" x 2"

## HEXAGON DROP BOX DIFFUSER



## Accessories

### CADDY CLIPS



- Beam Clamp Hanger

### AIR CRAFT CABLE



- 500 or 1000 Foot Spools
- #10, #20, #30 or #40 Rating
- Corner Cleat Saddles Available
- Add Clutchers Size To Cable

### PRE-FORMED BAND IRON



- 2" wide
- 16 - 12 Gauge Construction
- Standard 1/2" Bolt Hole(s)

### ROUND PIPE HANGER



- 2" wide
- 16 - 12 Gauge Construction
- Standard 1/2" Bolt Hole(s)

# ACCESSORIES

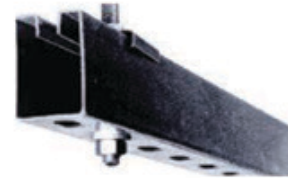


## BAND IRON

- 1" Thick
- 5' or 10' Lengths
- 10 pieces per bundle
- 18 & 20 Gauge Stocked

## UNI-STRUT / ALL THREAD

- Specify lengths & sizes



## PVC PAINT

- Poly Vinyl Coated  
Touch Up Paint



## TURNING VANE

- |         |          |
|---------|----------|
| 2" vane | 10' long |
| 2" rail | 10' long |
| 4" vane | 10' long |
| 4" rail | 10' long |
| 4" perf | 10' long |

- 24 Gauge
- Dimpled Construction
- Materials: Galvanized,  
Stainless Steel & Aluminum

## PIPE SHIELDS

- For Use Between Pipe Hanger  
and Insulation



## BLAST GATES

- Available in Full and Half Gates
- Available in 3" to 14"



## FLOOR SWEEPS

- 18 Gauge Fully Welded  
Construction



## CHINA/CHIMNEY CAPS

- Custom Made per Application



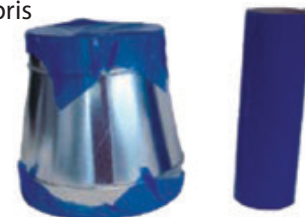
## PANDUIT STRAP

- Plastic available in 24" and 36"
- Metal available in 36"
- 3 Mil Thick Duct Wrap
- Protects Duct From Debris



## DUCT END WRAP

- 3 Mil Thick Duct Wrap
- Protects Duct From Debris





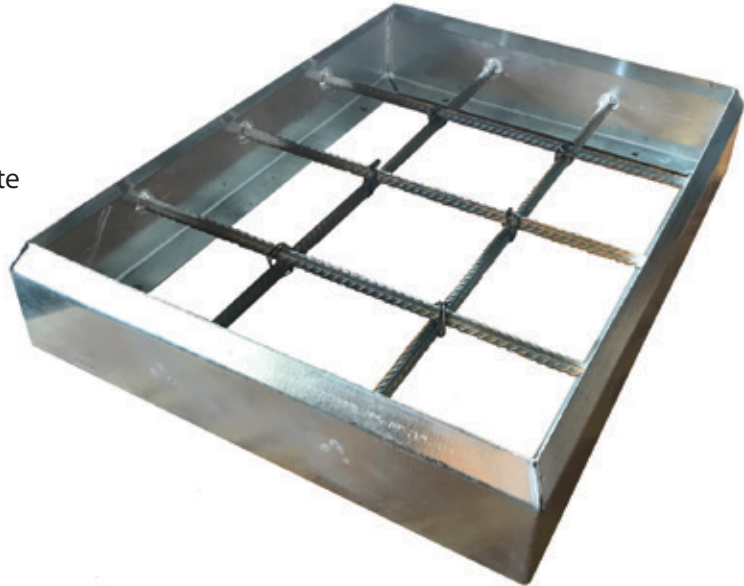


# CONCRETE FORM

## CONCRETE FORM

Available in any size

- 1/2" Rebar on 6" centers
- Saves time from building wooden forms
- Anchor down and then pour the concrete
- Major time saver



## Light SHIELD

### LIGHT SHIELD

Available in any size

- Painted Black
- Jobs spec these
- Available with or without insulation
- Attaches onto plenum diffusers to block seeing light through



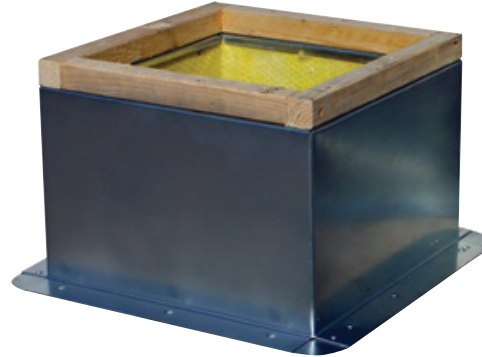
# ROOF CURBS



## Roof CURBS

### ROOF CURB

- Standard Sizes Shown
- Any Size or Height Available
- Standard Full Corners
- Standard 2x2 Untreated Wood Nailer
- Standard 1.5" Rigid Insulation
- Canted Curbs Available
- Raised Canted Curbs Available



#### 12" HIGH

MODEL	SIZE
C12-12	12x12
C12-16	16x16
C12-18	18x18
C12-21	21x21
C12-22	22x22
C12-24	24x24
C12-25	25x25
C12-28	28x28
C12-29	29x29
C12-30	30x30
C12-33	33x33
C12-34	34x34
C12-36	36x36
C12-39	39x39
C12-40	40x40
C12-45	45x45

#### 18" HIGH

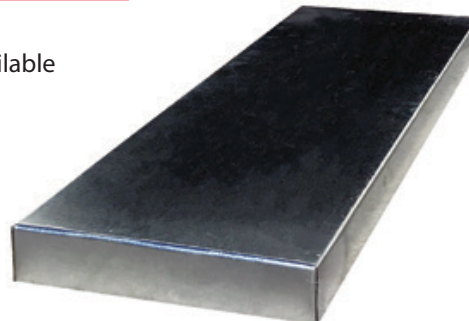
MODEL	SIZE
C18-12	12x12
C18-16	16x16
C18-18	18x18
C18-21	21x21
C18-22	22x22
C18-24	24x24
C18-25	25x25
C18-28	28x28
C18-29	29x29
C18-30	30x30
C18-33	33x33
C18-34	34x34
C18-36	36x36
C18-39	39x39
C18-40	40x40
C18-45	45x45

#### 24" HIGH

MODEL	SIZE
C24-12	12x12
C24-16	16x16
C24-18	18x18
C24-21	21x21
C24-22	22x22
C24-24	24x24
C24-25	25x25
C24-28	28x28
C24-29	29x29
C24-30	30x30
C24-33	33x33
C24-34	34x34
C24-36	36x36
C24-39	39x39
C24-40	40x40
C24-45	45x45

### TEMPORARY CAPS

- Standard Sizes Shown
- Any Size or Height Available
- Tops Cross Broke
- 2" High Standard
- Welded Corners
- Heavy Gauge



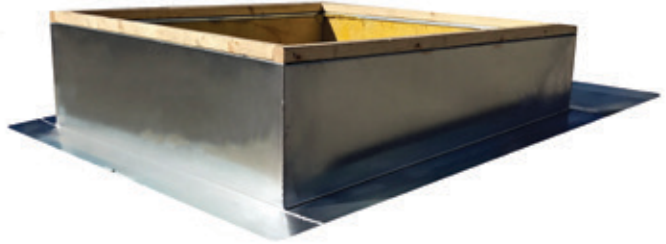
MODEL	SIZE
T-12	12x12
T-16	16x16
T-18	18x18
T-21	21x21
T-22	22x22
T-24	24x24
T-25	25x25
T-28	28x28
T-29	29x29
T-30	30x30
T-33	33x33
T-34	34x34
T-36	36x36
T-39	39x39
T-40	40x40
T-45	45x45



# SPECIAL CURBS & ADAPTORS

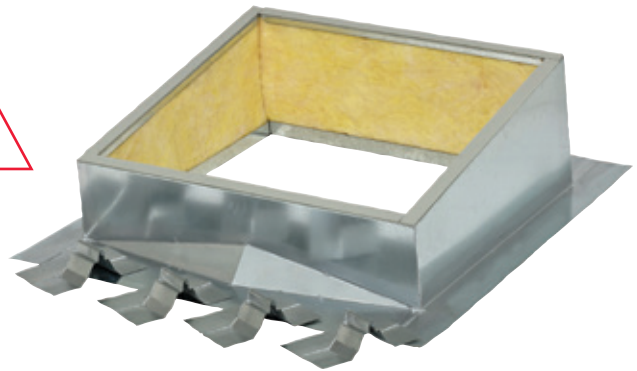
## SLOPED ROOF CURB

- All Sizes Available
- All Slopes Available
- Call For Pricing



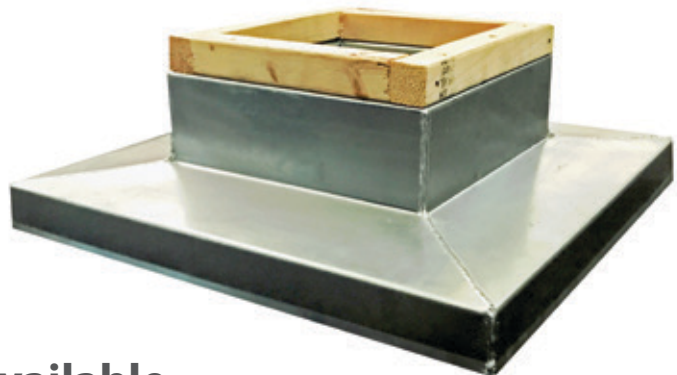
## STANDING SEEM ROOF CURB

- All Sizes Available
- All Slopes Available
- Call For Pricing



## CURB ADAPTORS

- All Configurations Available
- Call For Pricing



## Additional Accessories Available

- Wolminized Wood Nailers
- Burglar Bars
- Backdraft Mounting Flange
- Sound Attenuating
- Damper Trays
- Canted Bases
- Various Insulations
- Quick Ships
- Aluminum / Stainless
- Crickets



# ROOF PORTS

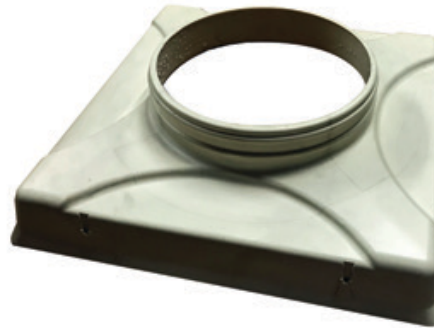


## Roof PORTS

### ROOF PORT COVER

MODEL	SIZE
RPC	13.5 x 13.5

- Does Not Include Curb



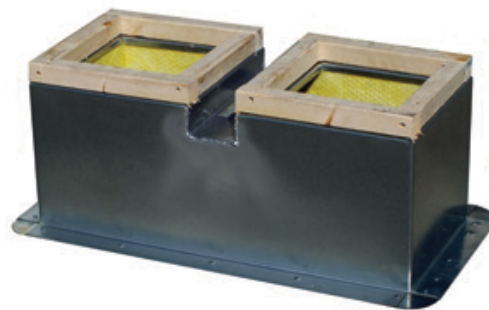
### ROOF PORT RUBBER CAPS

MODEL	SIZE
RP-126	(1) 2"-6"
RP-412	(4) 1"-2"
RP-481	(4) 3/8"-1"
RP-212	(2) 3/8"-1 (2) 1"-2"



### DOUBLE ROOF PORT CURB

MODEL	SIZE
DRPC	12x27.5



### DUCT & PIPE SUPPORTS

- Available in any size to fit any size duct or pipe
- Fits on top of equipment rail to be secured down





# EQUIPMENT RAILS

## ROOF RAILS

- Standard Sizes Shown
- Any Height, Length or Width Available
- Galvanized Cap Flashing

MODEL	LENGTH	HEIGHT
SR-3	3 ft.	12"
SR-4	4 ft.	12"
SR-5	5 ft.	12"
SR-6	6 ft.	12"
SR-7	7 ft.	12"
SR-8	8 ft.	12"
SR-9	9 ft.	12"
SR-10	10 ft.	12"



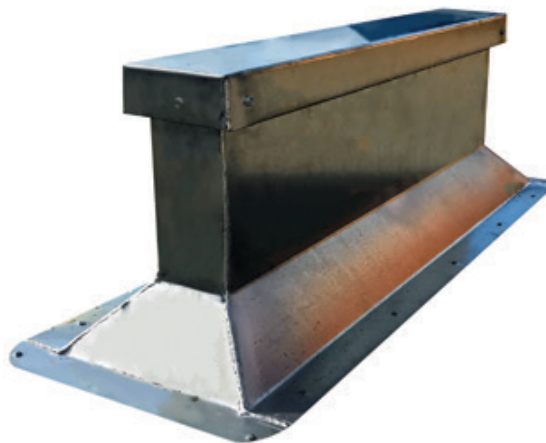
## PITCHED ROOF RAILS

- Any Pitch Available
- Any Height, Length or Width Available
- Raised Cant Available



## CANTED ROOF RAILS

- Any Height, Length or Width Available
- Raised Cant Available







# ABOUT THE COMPANY

## HRANEC CORPORATION

Hranec Corporation was founded in Uniontown Pennsylvania just south of Pittsburgh Pa. President Steve Hranec began his Sheet Metal Apprenticeship in 1995 and upon completion started Hranec Corp. Mechanical Contracting Company. Steve worked many long hours estimating in the evenings and installing during the day, which led to Hranec Corp's first employee (Pat Tate), who is still with the company and an instrumental Field Forman presently in charge of multimillion dollar projects. Hranec Corp's 1st commercial customer was Gabriel Brothers Department Store's (a local retailing business), which was aggressively expanding and became Hranec Corp's biggest customer at that time. With the need for more employees and a much bigger fabrication shop Steve engineered a state of the art fabrication shop in 2008. Hence Hranec Corp. not only fabricates ductwork products for their own construction projects they also wholesale their products across the East Coast. Growing up around a generation of Sheet Metal Workers and Pipe Fitter family members Steve's Dad always projected that one job sells the next. So they always put quality installations and products at the forefront of the business and that was very valuable helping the company grow from 1 employee (Pat Tate), to over 300 employees.

In 2017 Hranec Corp. acquired SMCO (Stuart McMunn Company), based out of Clarksburg, W.V. Founded in 1917, SMCO has a huge reputation as the best plumbing and pipefitting contracting business in West Virginia. Combining Hranec Corporation's Sheet Metal abilities with the SMCO Acquisition, Hranec Corp now offers complete Mechanical and Plumbing Construction services.

Hranec Corp. is also expanding their manufacturing operations with a brand new 140,000.00 sq. ft. fabrication shop. The new shop will include a pipe fabrication and Heavy plate shop while also expanding on the company's roof products that include Curbs, Rails, Pipe Portals, and RTU adaptors. The company also presently focuses on growing the 24/7 HV AC Service department, Ductwork Cleaning Department and a HV AC Controls Division.

Hranec Corporation uses the American Flag with their company logo as they always put American made materials at the forefront of the operation. We hope you enjoyed exploring our web site and please consider Hranec Corp. for your next Mechanical and plumbing project. (Always remember that performing very well on your current projects actually does help to sell the next project in the future).

Thanking you from all of us at Hranec Corp.





[WWW.HRANEC.COM](http://WWW.HRANEC.COM)

763 ROUTE 21, UNIONTOWN, PA 15401